

## TRV 200 TRV 100

### LED Road Traffic Light Signals for Railway Crossings

The Light Emitting Diode road traffic light signal has been developed to be used as a traffic signal for level crossings in harsh road and railway environments. The light unit has an increased safety and reliability compared to traditional signal lights.

- **Increased safety and reliability thanks to high quality LEDs used in the signal**
- **Low maintenance cost because of the long lifetime of the LEDs**
- **Reduced energy consumption compared to traditional incandescent signal units**
- **Self monitoring with 2 optoisolated outputs giving the feedback that LEDs are OK and that the LED unit is turned ON**
- **Two level luminous intensity for day and night mode control**
- **TRV 200 can be installed in a standard 200mm traffic light enclosure. The LED unit is delivered with a 6 meter cable**
- **TRV 200 unit has an extremely robust design with a UV-resistant polycarbonate lens and a back cover produced in aluminium**
- **TRV100 can be installed in a 100 mm traffic light enclosure, 2- and 3-aspect enclosures can be supplied as standard products**
- **TRV100 LED unit is delivered with a 2 m cable**



## Main Technical Specification

<b>Visual lens size</b>	Ø 200 mm
<b>Lens material</b>	Polycarbonate
<b>Light source</b>	LED (Light Emitting Diode)
<b>Minimum luminous intensity on optical axis white, green and red</b>	Day 400 cd and Night 100 cd
<b>Minimum luminous intensity on optical axis blue and yellow</b>	Day 200 cd and Night 50 cd
<b>Distribution of the luminous intensity</b>	Wide beam signal type W according to EN12368 (horizontal divergence about ±15 ° @ 50 % intensity)
<b>Colors</b>	White, red, yellow, green, blue and red/white
<b>Signal standards</b>	According to EN12368
<b>Supply Voltage</b>	20 - 32 V DC, nominal 24 V DC
<b>Protection class of the unit housing</b>	IP 66
<b>Weight</b>	800 g
<b>Temperature range</b>	-40 ° - +40 °C (EN 12368 Class C)
<b>Power consumption</b>	8 - 13W in the day mode 3 - 5 W in the night mode
<b>Control inputs</b>	2 optoisolated inputs: On/Off and Day/Night
<b>Feedback outputs</b>	2 optoisolated outputs: LEDs OK and Unit On
<b>Overvoltage protection at Voltage supply</b>	Transient protection with MOV and short circuit protection
<b>Protection for control inputs and feedback outputs</b>	4 kV isolation and transient protection with MOVs
<b>Unit connection cable</b>	SAB SD 200 C 12x0,5 mm <sup>2</sup> / length 6,0 m
<b>Traffic light enclosures</b>	One, two and three aspect housings available

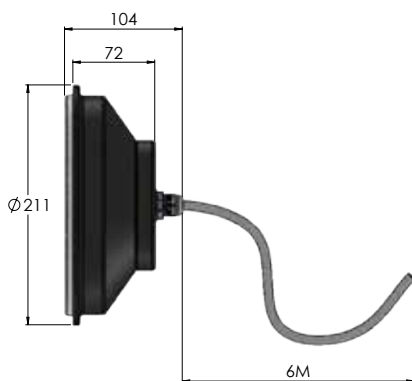
## Product

### 200 mm, 24 VDC interface

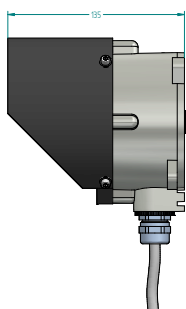
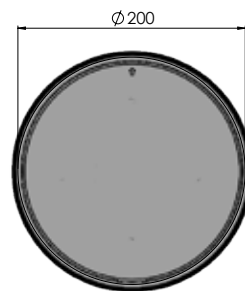
TRV 200W	white
TRV 200R	red
TRV 200G	green
TRV 200Y	yellow
TRV 200B	blue
TRV 200RW	red/white

### 100mm, 24 VDC interface

TRV 100W	white
TRV 100R	red
TRV 100G	green
TRV 100Y	yellow



TRV 200



TRV 100

