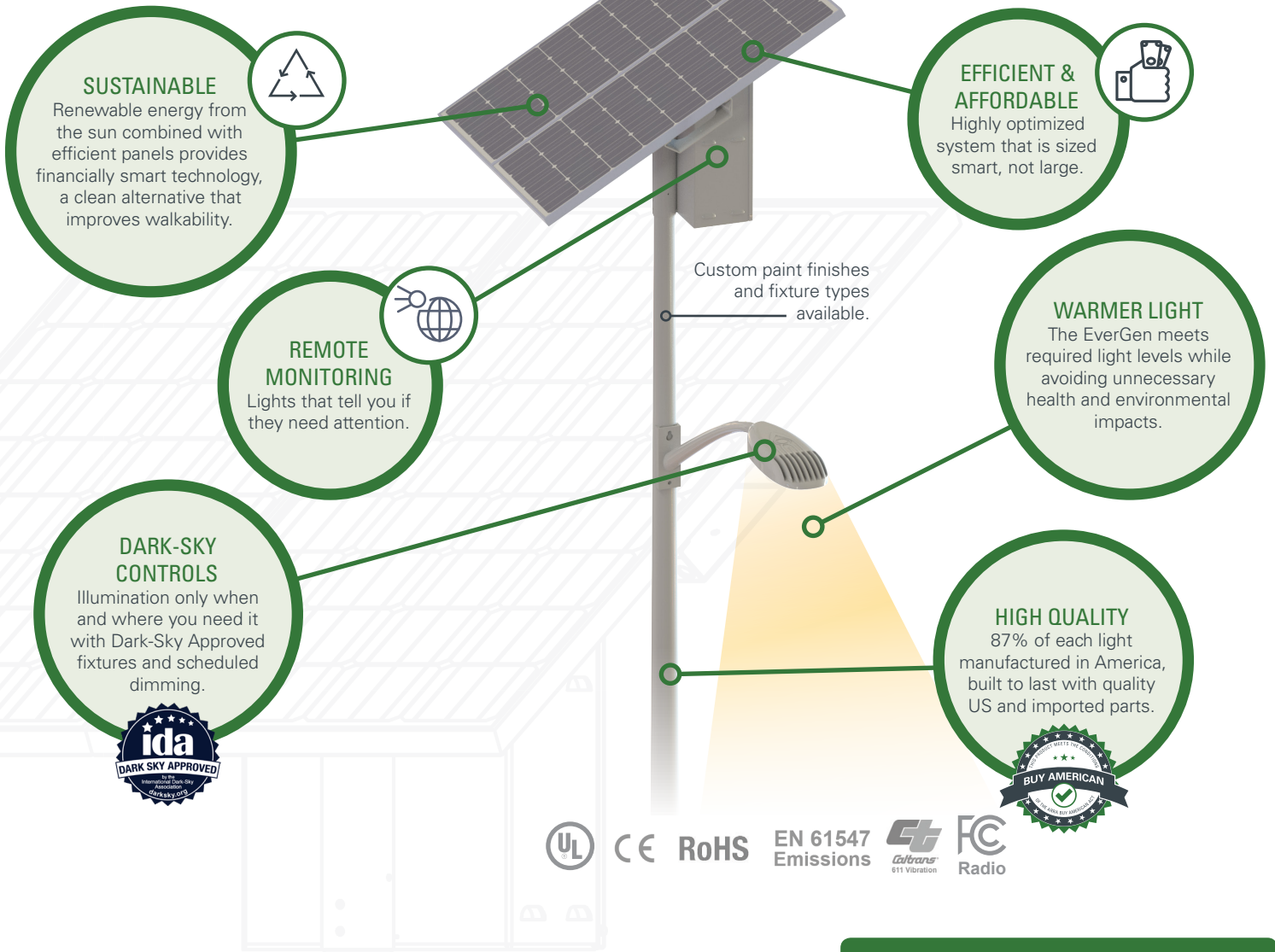


# MEET THE SMARTER EVERGEN<sup>®</sup> SOLAR LIGHTING SYSTEM.



UL CE RoHS EN 61547 Emissions Caltrans 611 Vibration FC Radio

## 3 STEPS

WE TAKE TO GUARANTEE OUR EVERGEN WILL PERFORM AS PROMISED:

**01** Engineer a system that meets required light levels. **We design it smart, not large, to ensure cost savings.**

**02** Build it tough to withstand heat, cold, wind, and moisture. **We offer a 10-year standard warranty.\***

**03** Accurately size for each location. **We guarantee light performance over the long term as planned.**

\*5-year warranty on standard battery. Extended-life 10-year battery upgrade available.

BUILD AN ESTIMATE TODAY AT [SOLARLIGHTING.COM](http://SOLARLIGHTING.COM) >

# EVERGEN®

## TECHNICAL SPECIFICATIONS



SOLAR PANEL	1 Battery		2 Batteries		3 Batteries		4 Batteries	
	EPA (sq ft)	Weight (lbs)	EPA (sq ft)	Weight (lbs)	EPA (sq ft)	Weight (lbs)	EPA (sq ft)	Weight (lbs)
Single	7.33	145	8.18	215	8.18	273	8.18	331
Double	14.67	174	15.52	243	15.52	301	15.52	360

\* Luminaire and arm not included. System weight and EPA will vary based on the number and type of both fixtures and batteries. The chart above is for reference only. Sol provides a calculated EPA and weight when a system is quoted and submitted.

SYSTEM DATA	
Colors	Aluminum/silver (natural finish), black, bronze. Custom RAL colors available upon request.
Material	Grade A corrosion resistant aluminum for panel mounts and battery enclosure. Steel and aluminum poles available.
Security	Batteries mounted at the top of pole to reduce theft and vandalism. Security bolts used to fasten cover.
Options	Decorative painted panel pan
Pole Tenon	3.5" (88.9mm) O.D. x 6" (152.4mm)
Panel Quantity	1-2 based on sizing
CONTROLLER	
Monitoring	LightGuard™ remote monitoring package
Charging Type	MPPT
LED Fixture Power	Via integrated onboard high-efficiency driver
Operating Profile Options	Dusk-to-dawn 100% power, various dimmed profiles
Day/Night Transition	Via solar panels
BATTERY	
Type	Maintenance-free valve regulated lead acid; spill-proof, leak-proof.
Standard Options	Gel Technology Group 27 (5-year)
Extended Life Options	Pure Lead AGM Technology Group 31 (10-year)
Quantity	1-4 based on sizing
FIXTURES	
Type	Cree XSP High Output Solar Series
IES Distribution Types	Type 2 Long, 3 Medium, 4 Medium
Color Temperature Options	3000K, 4000K
Efficacy Range	165 to 130 lumens per watt from complete fixture (3000K, via LM-79 testing)
Color Rendering Index	Minimum of 70 CRI
Mounting	42mm-60mm (1.6in-2 $\frac{3}{8}$ in) OD horizontal tenon, min 203mm (8.0in) in length

WARRANTY (See warranty documentation for more details)	
Electronics	10 years
Battery	5-year warranty on standard battery
	Up to 10-year extended-life battery upgrades available
Fixture	Manufacturer's Warranty – 10 years limited excluding finish
Pole	Lifetime (excluding finish)
Hardware	10 years

### EverGEN® ENERGY MANAGEMENT SYSTEM

The EverGEN® ensures bright, reliable light output and healthy, high-functioning lighting systems with low-maintenance operation and remote monitoring.

- Bluetooth® wireless technology and setup app for simple and secure setup
- System health notifications via email if an EverGen isn't working as expected
- Programmed by Sol based on your project requirements
- Flexible operating modes (dusk-to-dawn, split night, split night with dimming)
- Integrated MPPT charging and LED driving system reduces system failures, overall system complexity, and cost
- Integrated surge protection and noise reduction
- Keyed connectors for simple and reliable assembly
- Temperature compensated and MPPT controlled battery charging to maximize battery life and energy collection
- Rugged solid state design ensures long life and no maintenance
- 10-year limited warranty

US and International patents apply. Other patents pending. "Sol" logo is a trademark of Carmanah Technologies Corp. All Carmanah products are manufactured in facilities that are certified to ISO quality standards.

The Bluetooth® word mark and logos are registered trademarks owned by the Bluetooth SIG, Inc. and any use of such marks by Sol Inc. is under license. Other trademarks and trade names are those of their respective owners.

Document: SELL\_SOL\_EverGen\_RevC