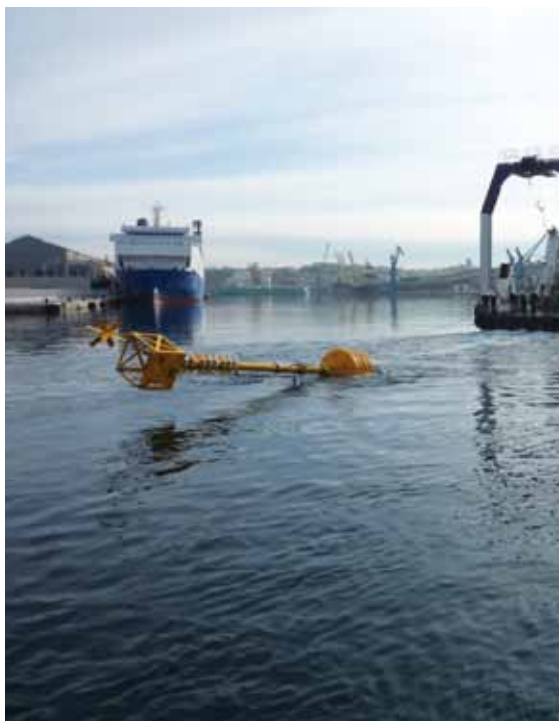


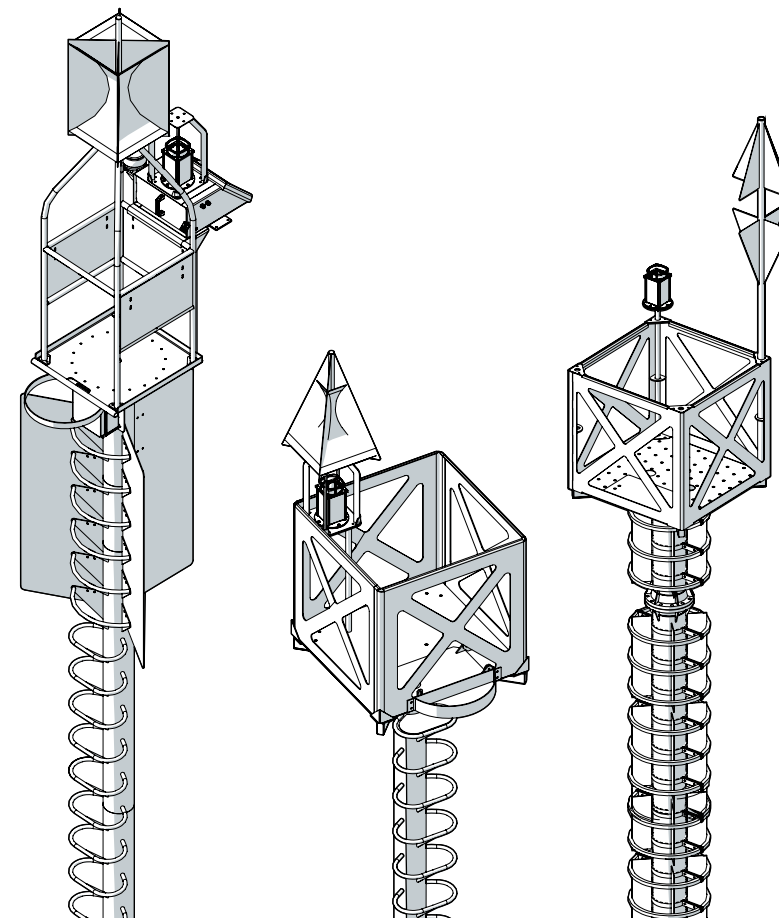
BALISAGE FLOTTANT



Les dimensions des BFI sont variables en fonction des sites d'implantation, n'hésitez pas à nous contacter pour un dimensionnement sur-mesure.

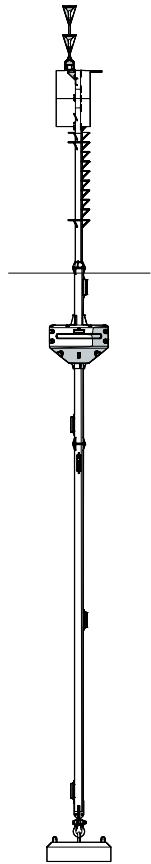
SPÉCIFICATIONS	
APPLICATIONS	Offshore, Côtier, Portuaire
DIAMÈTRE	1,85 à 4m
HAUTEUR HORS TOUT	jusqu'à 30m
PLAN FOCAL	jusqu'à 6m
TIRANT D'EAU	Pour l'ensemble de ces paramètres définis par le calcul sur la base des conditions de site
SURFACE VISIBLE	jusqu'à 10m ²

EQUIPEMENTS	
ELEMENTS ADDITIONNELS	Aluminium marin peint
STRUCTURE	Acier peint ou galvanisé à chaud
FLOTTEURS	mousse 80kg/m ³

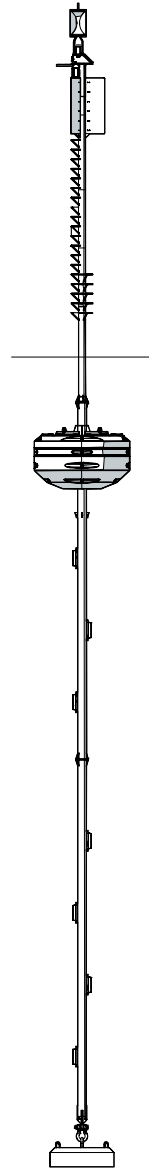


NACELLES NAC, STD ET SPL

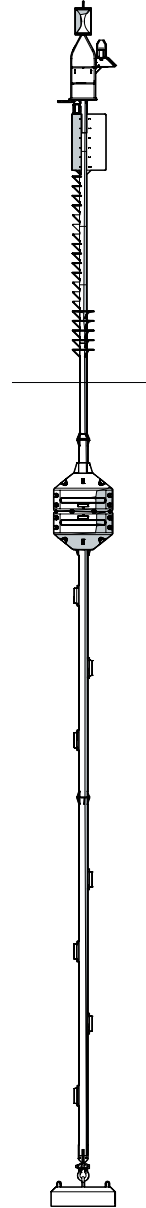
Les éléments de mouillage (manilles, chaînes, émerillons, corps-morts) sont disponibles dans la section mouillage du catalogue.



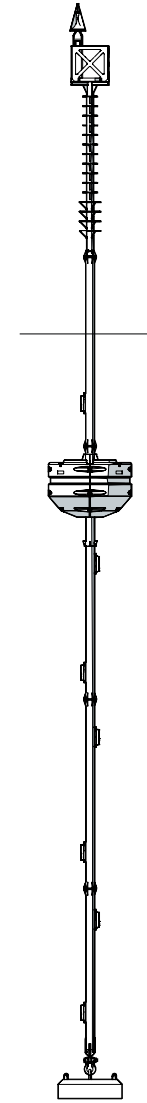
BFI 2500-1 SPL



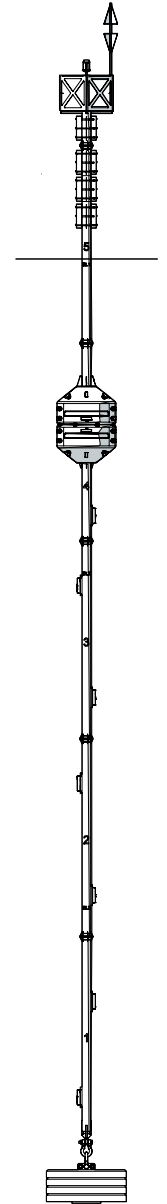
BFI 9000-1 SPL



BFI 2500-2 NAC



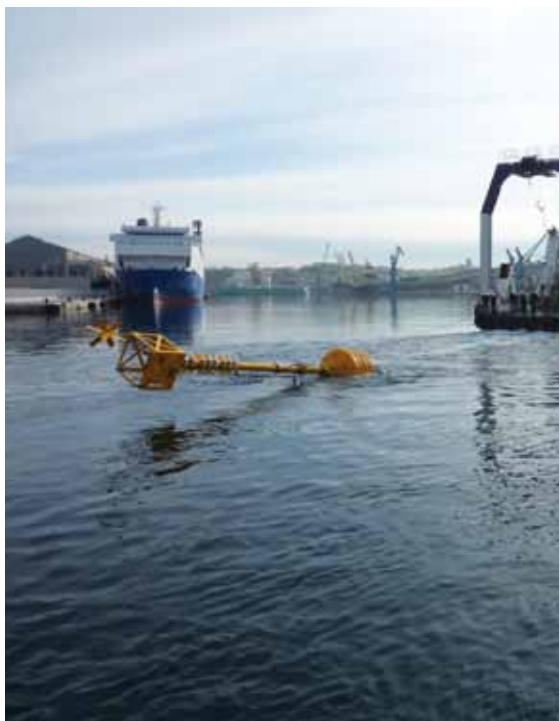
BFI 7000-1 STD



BFI2500-2 STD

Les photos et illustrations publiées sont non contractuelles.

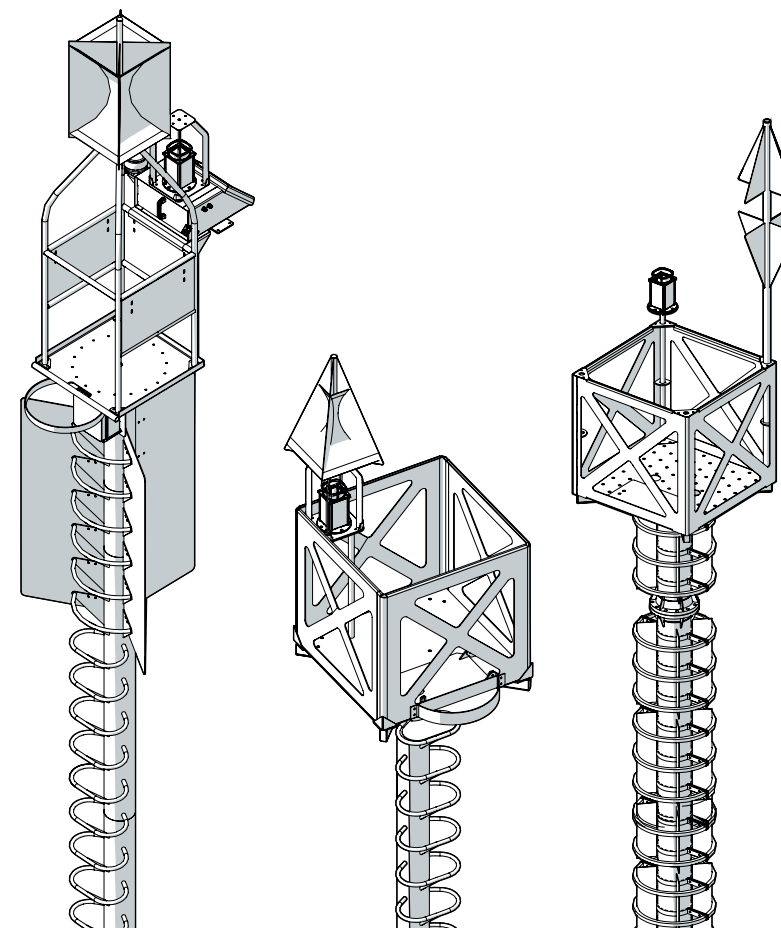
FLOATING BEACONING



BFI dimensions need to be determined by site conditions and calculation of data for each location.

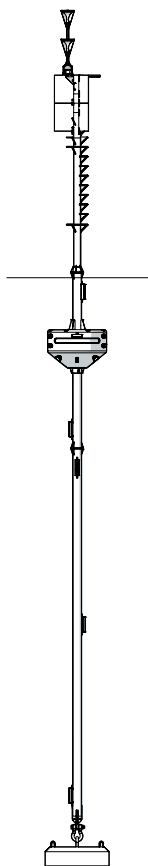
SPECIFICATIONS	
APPLICATIONS	Offshore, coastal, harbour
DIAMETER	1,85 to 4
OVERALL HEIGHT	Up to 30m
FOCAL PLANE	Up to 6m
DRAUGHT	All these parameters will be calculated on the basis of the site conditions.
VISIBLE SURFACE	Up to 10m ²

EQUIPEMENTS	
ADDITIONNAL ELEMENTS	Coated Aluminium marine grade
STRUCTURE	Hot Dip Galvanizer or Coated Steel
FLOATS	foam 80kg/m ³

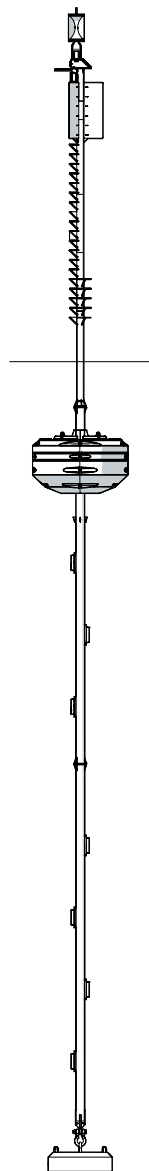


WORK PLATFORM

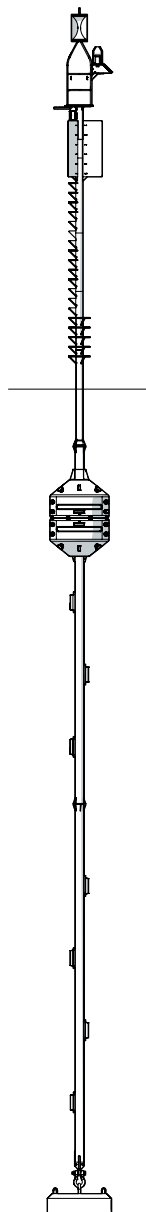
Anchoring elements (skackles, chains, swivels, sinkers) are available in the mooring accessories section in the catalogue



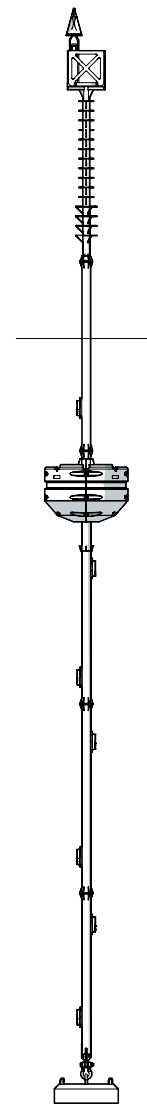
BFI 2500-1 SPL



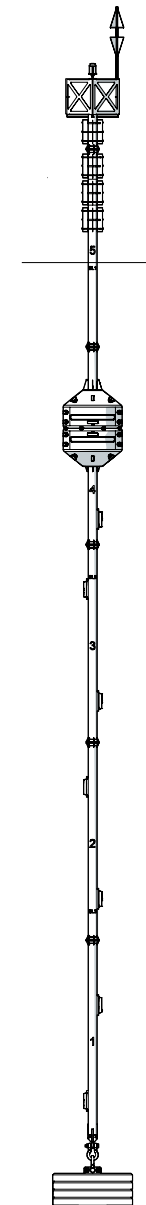
BFI 9000-1 SPL



BFI 2500-2 NAC



BFI 7000-1 STD



BFI 2500-2 STD

Non-contractual illustrations and photos