

| DIMENSIONS (m)         |     |         |        |            |
|------------------------|-----|---------|--------|------------|
| Modèle                 | QRH | Manille | D-link | Statique T |
| Ø: Diamètre            | 2,6 | 2,6     | 2,6    | 2,6        |
| HHT: Hauteur hors tout | 3,7 | 4,3     | 4,4    | 4          |
| TE : Tirant d'eau      | 1,6 | 1,5     | 1,6    | 1,4        |
| FB: Franc bord         | 1   | 1       | 0,9    | 1,1        |
| A: Structure           | 3,6 | 3,6     | 3,6    | 3,6        |

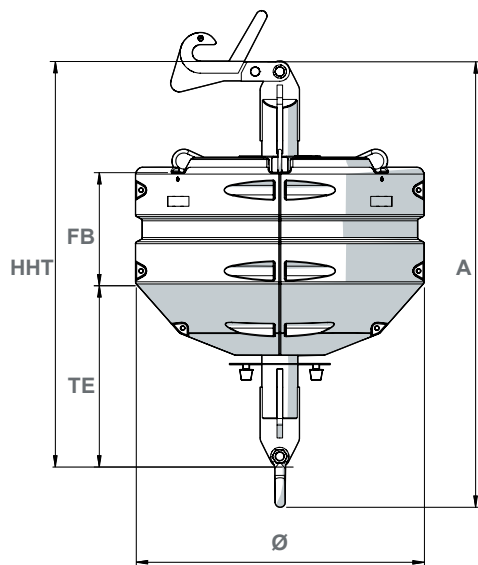
| SPÉCIFICATIONS       |  |            |        |            |
|----------------------|--|------------|--------|------------|
| Modèle               | QRH  | Manille    | D-link | Statique T |
| Poids (t)            | 1,8  | 1,76       | 1,68   | 1,46       |
| Flottabilité (kg/cm) | 47   | 47         | 47     | 47         |
| CMU (t)              | 150t / 70t                                 | 150t / 70t | 70t    | 70t        |
| Applications         | Haute mer, côtier, estuaire, port, rivière |            |        |            |
| Structure            | Acier peint                                |            |        |            |
| Flotteurs            | Polyéthylène basse densité UV 15           |            |        |            |



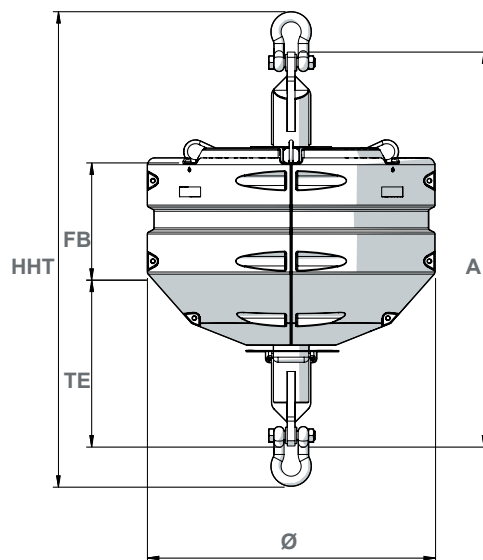
Test en traction



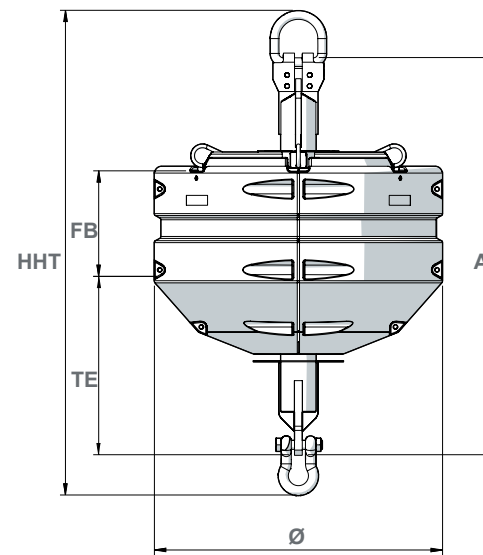
\*En fonction du mouillage prévu pour le(s) site(s).



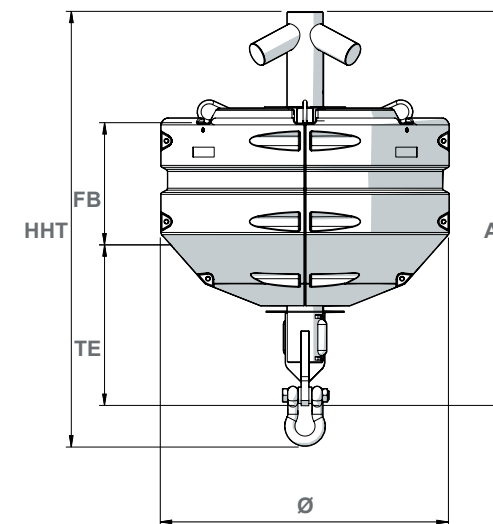
AMR 7000 QRH



AMR 7000 MANILLE



AMR 7000 D-LINK



AMR 7000 STATIQUE T

## DIMENSIONS (m)

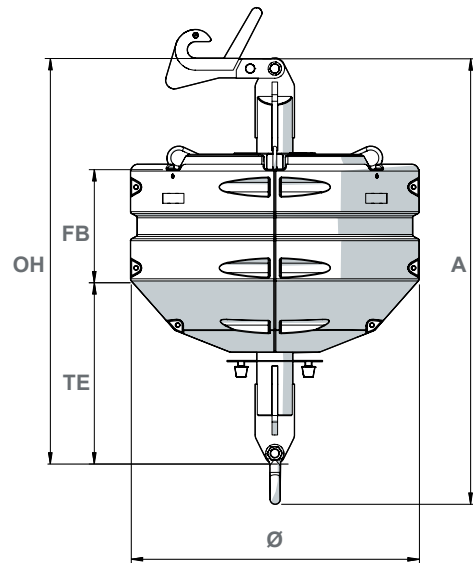
| Model              | QRH | shackle | D-link | static T |
|--------------------|-----|---------|--------|----------|
| Ø: Diameter        | 2,6 | 2,6     | 2,6    | 2,6      |
| OH: Overall height | 3,7 | 4,3     | 4,4    | 4        |
| TE : Draught       | 1,6 | 1,5     | 1,6    | 1,4      |
| FB: Freeboard      | 1   | 1       | 0,9    | 1,1      |
| A: Structure       | 3,6 | 3,6     | 3,6    | 3,6      |

## SPECIFICATIONS

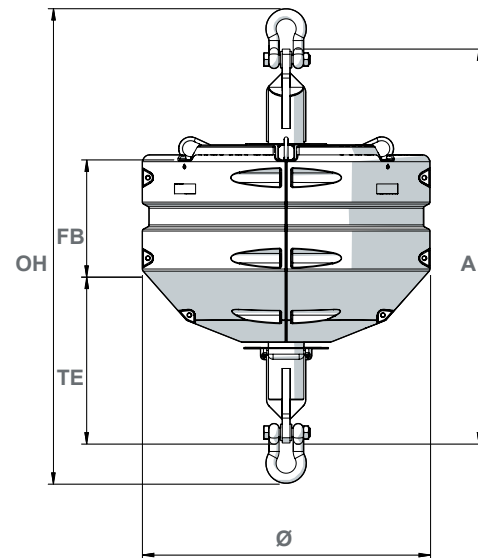
| Model            | QRH  | shackle    | D-link | static T |
|------------------|--|------------|--------|----------|
| Weight (t)       | 1,8  | 1,67       | 1,68   | 1,4      |
| Buoyancy (kg/cm) | 47   | 47         | 47     | 47       |
| SWL (t)          | 150t / 70t                                     | 150t / 70t | 70t    | 70t      |
| Applications     | High sea, coastal, estuary, ports, rivers      |            |        |          |
| Structure        | Glassflake reinforced coated steel structure   |            |        |          |
| Floats           | Low density polyethylene 15 years UV protected |            |        |          |



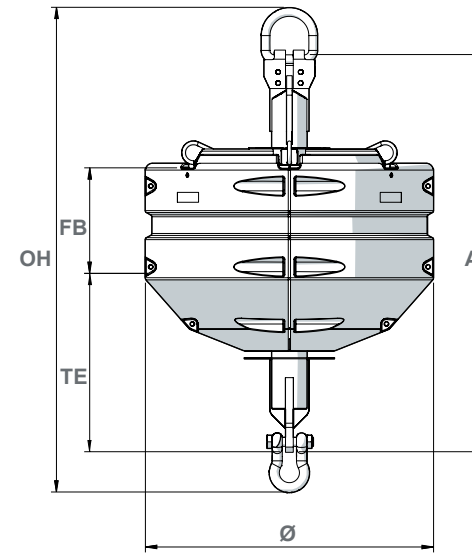
Tension test



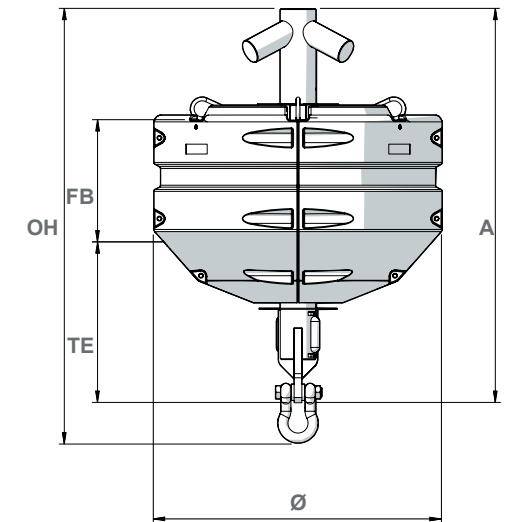
AMR 7000 QRH



AMR 7000 SHACKLE



AMR 7000 D-LINK



AMR 7000 STATIC T