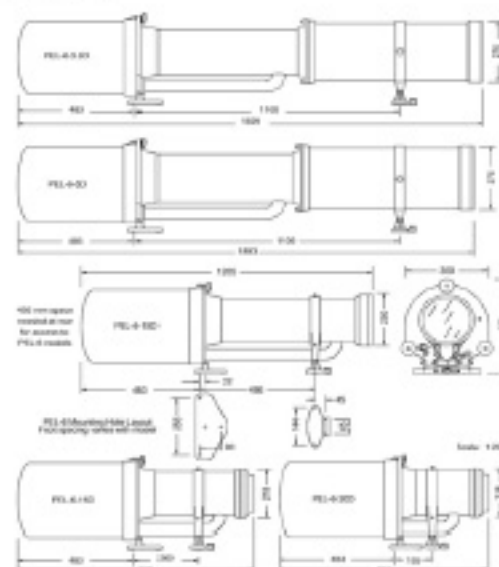




Dimensions



specifications

Light source	M36 250 watt tungsten-halogen lamp
Lampchanger	Vega 6-position VLC-152A (bi-pin)
Power supply	24-28 VDC battery float (mains or solar)
Anti-reflection coatings	Standard on all PEL-6 sector lights
Sector angles	Individual sectors custom-made for each lights
Oscillating boundary	Factory-fitted option for PEL-6
Night intensity reduction	Night filter + lamp voltage reduction combined
Flash characters	Fixed + 255 characters, user-selectable
Flasher / controller	CALC-2001 computer-assisted light controller
Lamp power regulation	Pulse-width-modulation
Construction materials	Gunmetal, stainless steel, copper tube
Exterior finish	Epoxy primer-surfacer, 2-pot polyurethane gloss

	PEL-6 (24V, 250Watt TH, full intensity)					
	3,5°	5,0°	7,5°	10,0°	15,0°	20,0°
Substance of light	3,5°	5,0°	7,5°	10,0°	15,0°	20,0°
White sector intensity (cd)	726,5	356,2	158,3	89,2	39,7	22,5
Coloured sector intensity (cd)	185	90,8	40,3	22,5	10	5,5
Vertical divergence	2,1°	3,0°	3,9°	4,3°	5,0°	5,6°
Boundary resolution	<1,0°	<1,0°	<1,0°	<1,0°	<1,0°	<1,0°
Sector accuracy	<1,0°	<1,0°	<1,0°	<1,0°	<1,0°	<1,0°
Overall length (mm)	1929	1893	1288	1209	975	872
Shipping weight (kg)	120	110	95	95	95	90